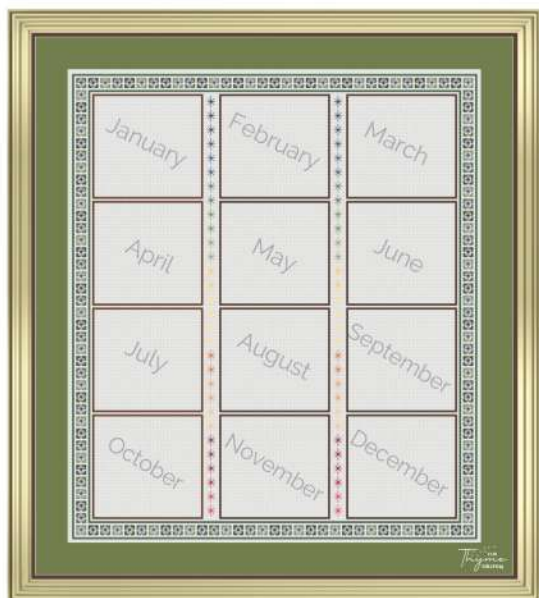






YEARLY SAL BORDER

P A T T E R N



Thread Guide

Use 2 strands for all full stitches.

	DMC 367	Pistachio Green	1656
	DMC 433	Brown Medium	840
	DMC 898	Coffee Brown Very Dark	1680
	DMC 3362	Pine Green Dark	552
	DMC 3363	Pine Green Medium	552
	DMC 3364	Pine Green	552

Fabric Requirements

If you are using 14 count Aida or 28 count even weave, we recommend a 20 inch X 21 inch fabric. This allows for a couple extra inches on all sides.

Our model was stitched on white 28 count Laguna fabric over 2 threads.

Recommended fabric colour: White

SPECIAL NOTE: For all stitches in DMC 433 - These are duplicated in the individual monthly patterns, they only need to be stitched once. They are included here for placement reference.

SPECIAL NOTE: The blue shaded area of the graph is a duplication of the symbols on the connecting pages. They should only be stitched once and are duplicated to provide a reference point.

YEARLY SAL BORDER

P A T T E R N

Backstitch

Use 1 strand for all backstitch.

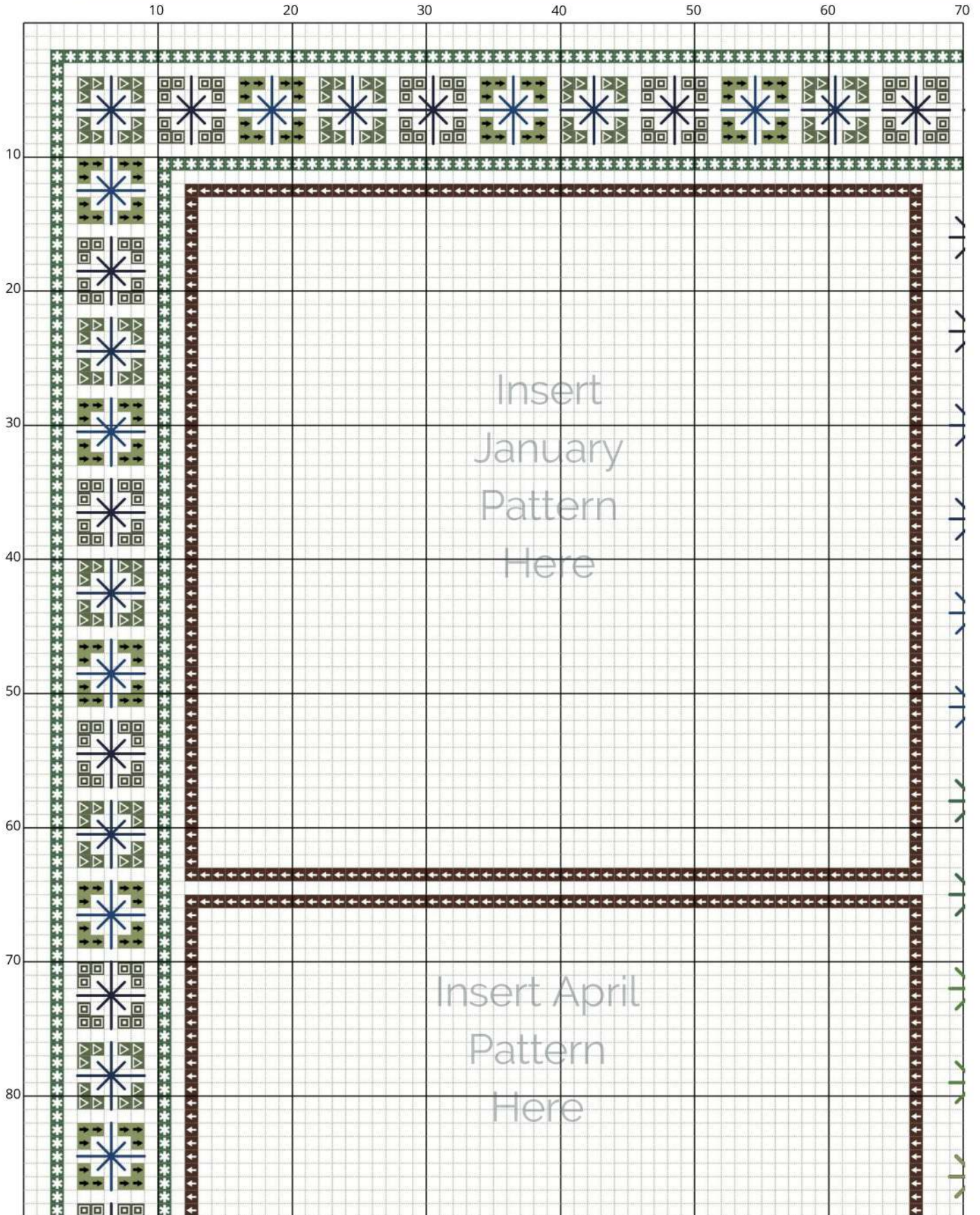
	DMC 311	Navy Blue medium	200
	DMC 312	Navy Blue light	200
	DMC 367	Pistachio Green dark	16
	DMC 743	Yellow medium	16
	DMC 744	Yellow pale	16
	DMC 745	Yellow light pale	16
	DMC 823	Navy Blue dark	204
	DMC 988	Forest Green medium	16
	DMC 3364	Pine Green	16
	DMC 3853	Autumn Gold dark	20
	DMC 3854	Autumn Gold medium	16
	DMC 3855	Autumn Gold light	16
	DMC 498	Christmas Red dark	16
	DMC 304	Christmas Red medium	16
	DMC 3801	Christmas Red light	16

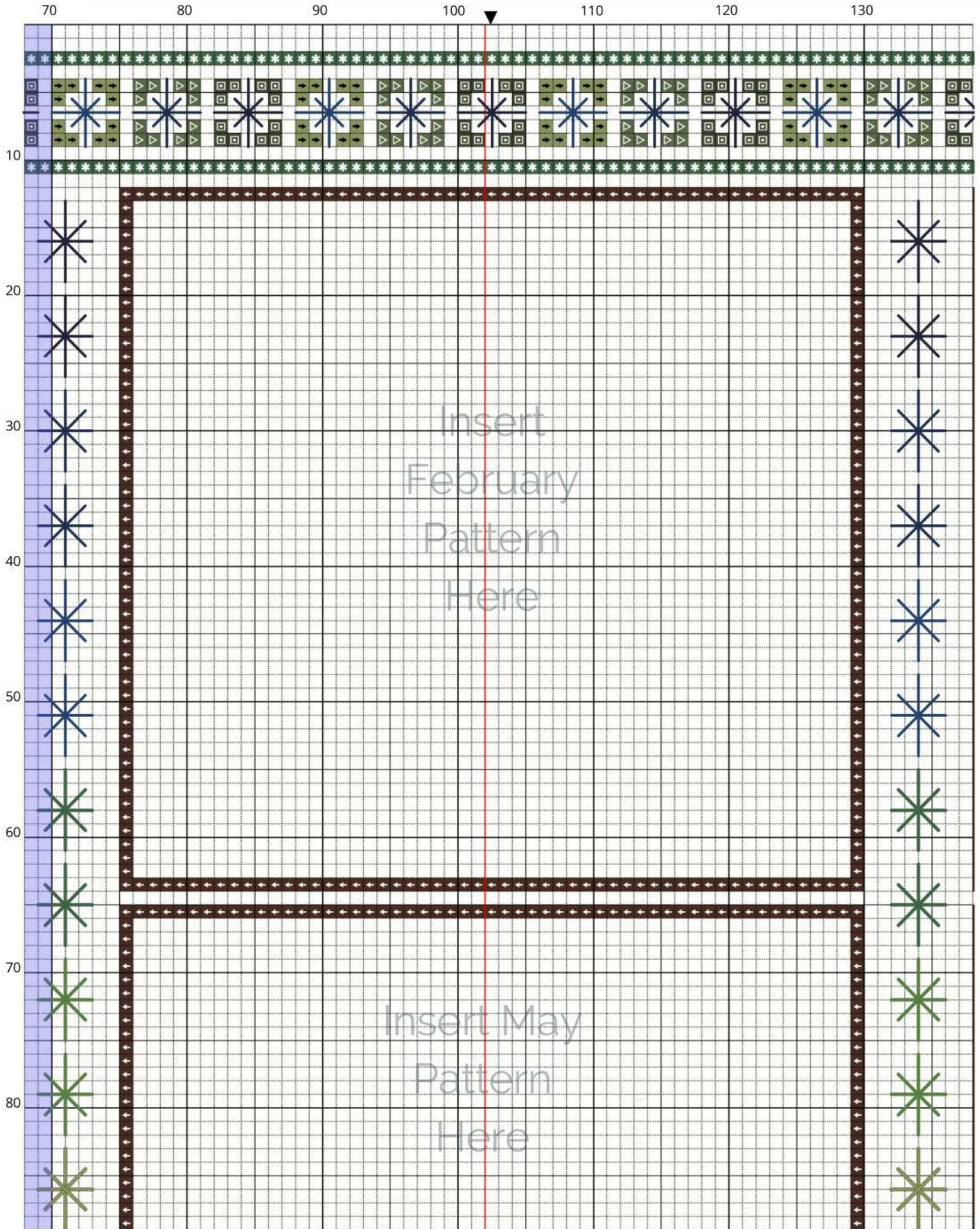
Stitch Counts

The stitch count for this pattern is:
201 X 231 (14.5 in X 16.5 in)

Full Stitches - 5832

Backstitches - 800





140

150

160

170

180

190

200

20

30

40

50

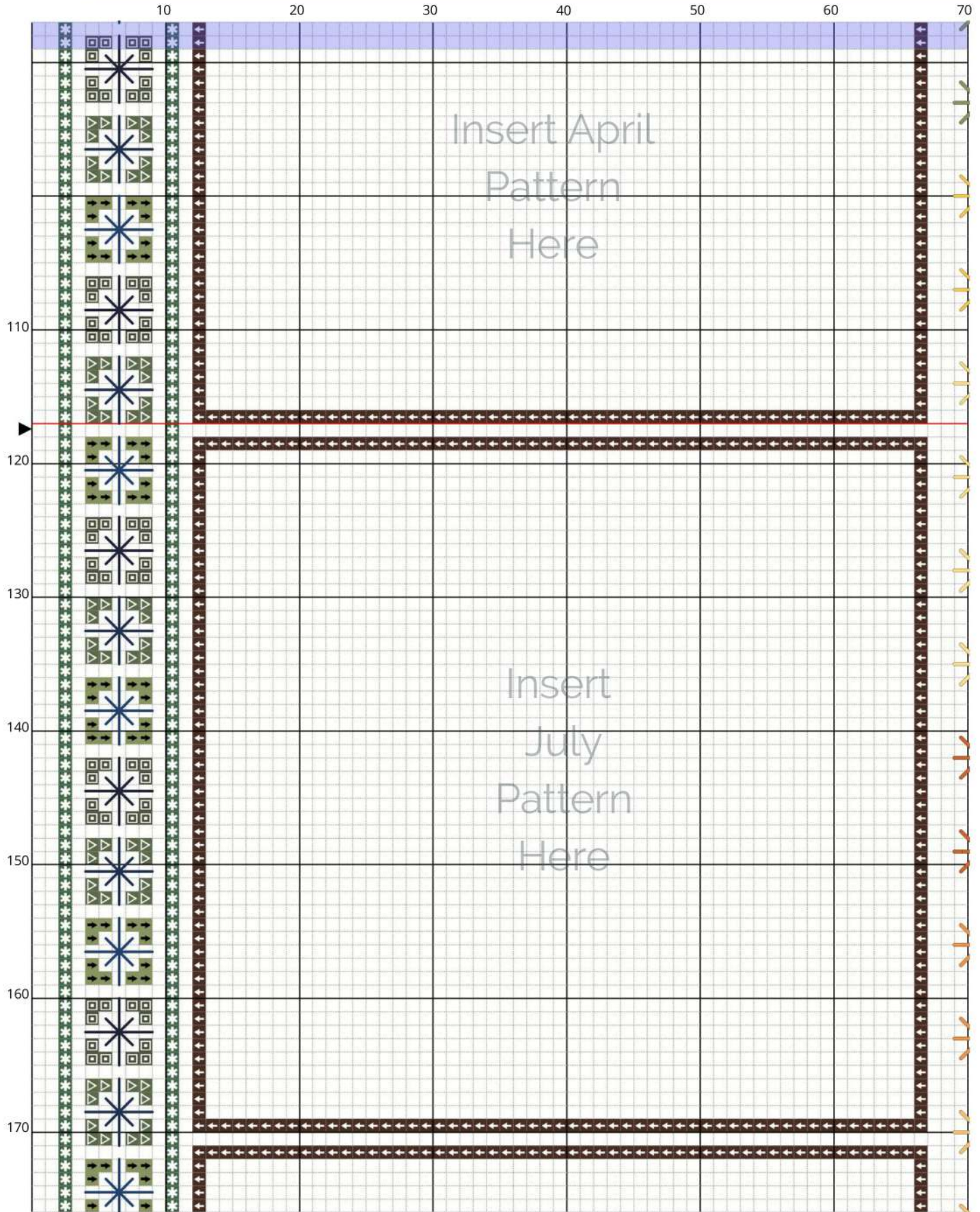
60

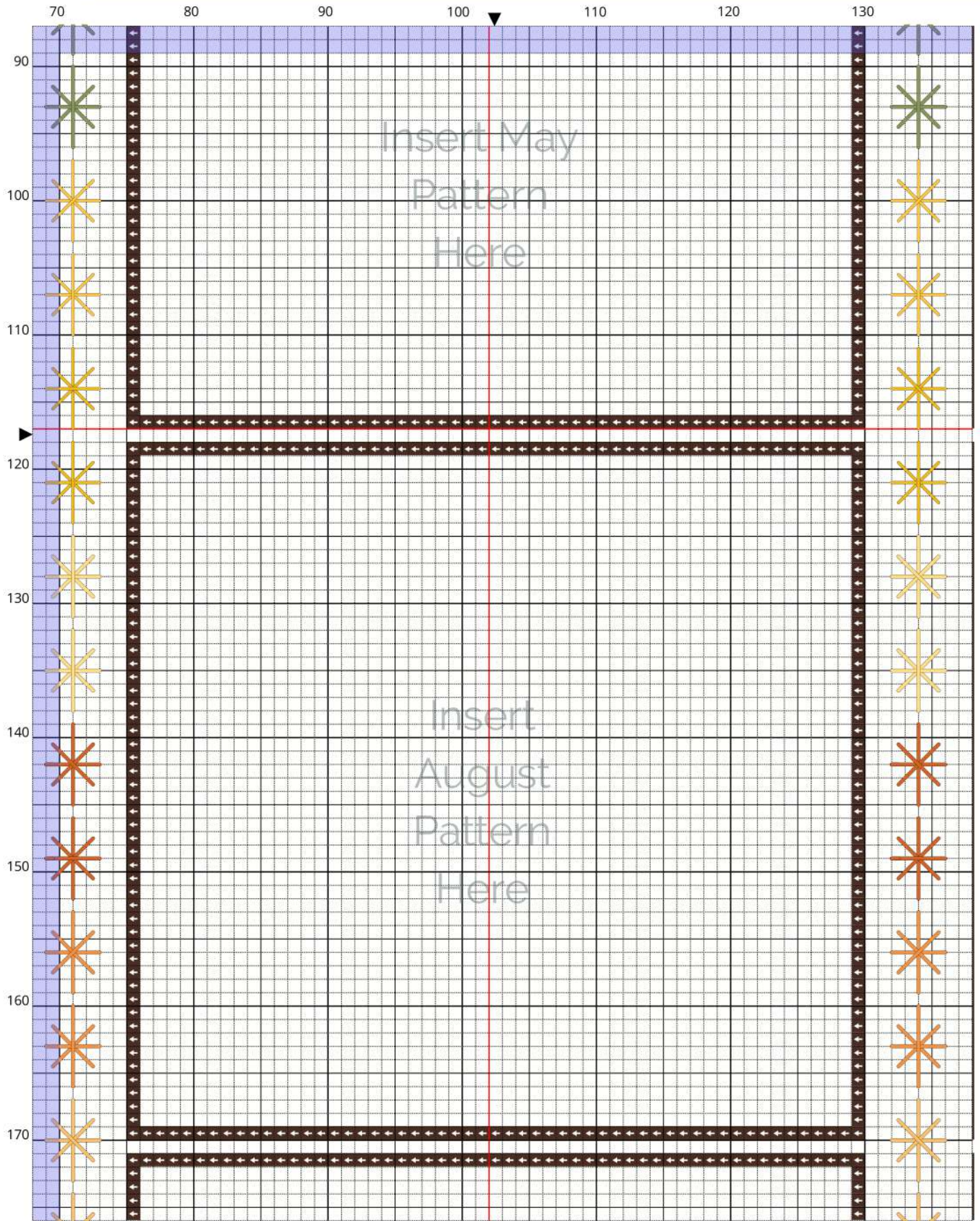
70

80

Insert
March
Pattern
Here

Insert June
Pattern
Here





Insert May
Pattern
Here

Insert
August
Pattern
Here

